

# KitWeb iButton

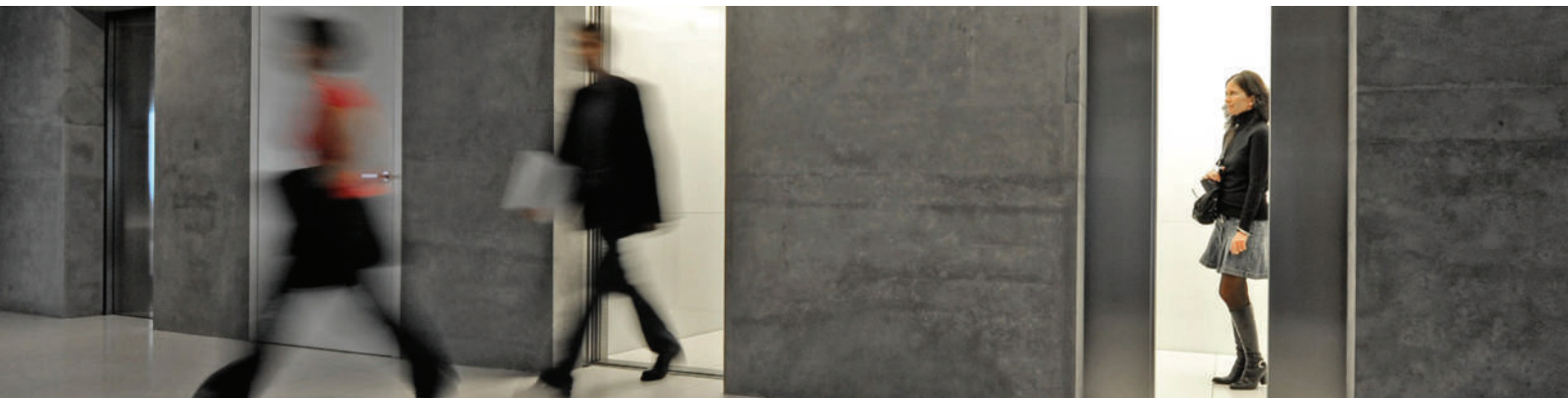
Product code

0510



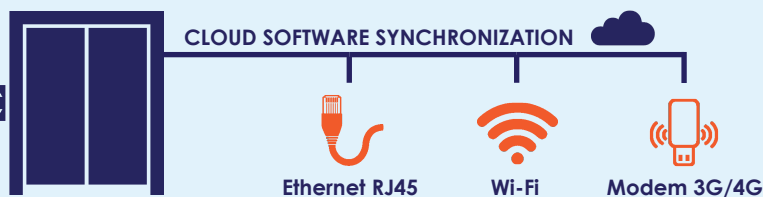
KitWeb iButton is a cloud-based iButton™ key switch for monitoring and controlling users of an elevator. It works with all types of elevator's panels.

The kit combined with the cloud software allows you to perform all operations on users and to consult customizable reports of the usage without going to the facility.



For user management and monitoring, it is necessary the specific cloud software and USB device.

User's rules are defined with a PC, or any device connected to the internet, and they are applied to the KitWeb instantly.



The controller, included in the KitWeb iButton, has an internal memory capable of storing up to 8.168 iButton™ keys, and has a single relay output.

The user can unlock the panel with his personal key only during a specific period, in a day and at the time or for the number of uses assigned to him.



**ELEVATOR CAB'S BUTTON  
PANEL ENABLING**



**EVENT**

If a user is authorized, or if an attempt is made, an event in the cloud software is created. Each event reports the specific time and the name of the user that performed the request.

In the absence of an internet connection, events are stored in a memory for 8.192 events until the synchronization with the cloud software happens.



The cloud software can be accessed from a web interface. With a few simple interactions you are able to manage every KitWeb.



**USERS AND  
GROUPS**

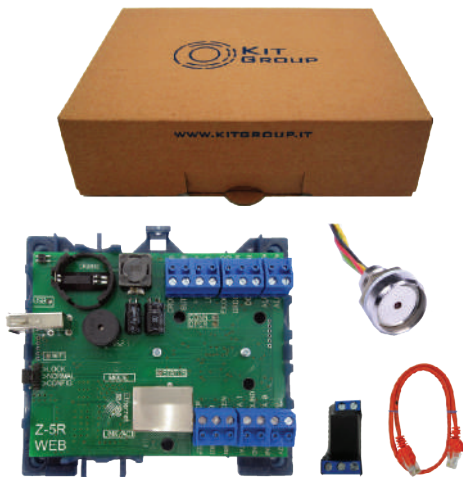


**TIME  
ZONES**



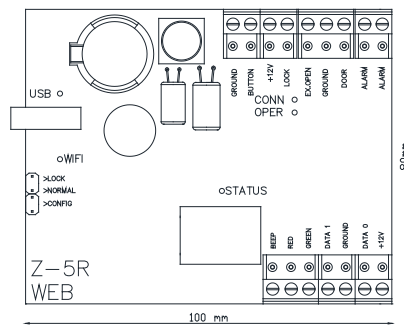
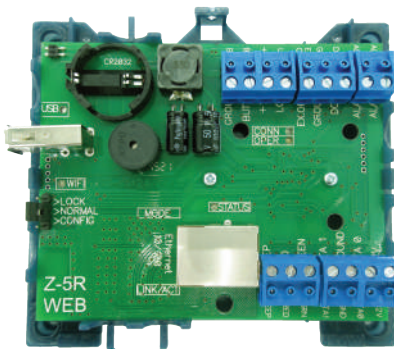
**DOWNLOAD  
REPORT**

# TECHNICAL DATA

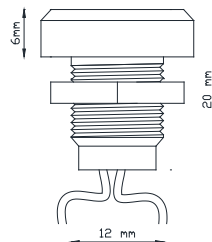
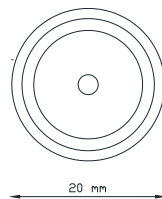


Input:	12V DC 3,5A
Consumption:	300mA
Output:	12V DC
Reader's input:	n°2
Reader's data protocol:	Dallas - TM
Operational temperature (°C):	- 30° C to + 50° C
Number of users:	max 8.168
Number of events:	max 8.192
Authorization:	0 to 220 sec
Sound alerts:	yes
Warning lights:	yes
PC interface port:	Ethernet cat.5e
Dimensions of the controller (mm):	100 x 80 x 18
Dimensions of the reader (mm):	d20 x 20, hole d12
Controller - Reader distance (m):	max 15m

## KitWeb iButton is complete



The controller **Z-5R WEB** has a single 12V DC output for relay (included) and two iButton TM key reader input. The controller can be positioned on the elevator roof or at a maximum distance of 15m from the reader.



**KTVS** is a contact reader for iButton TM keys with single-color led indicator. The reader is fairly small and can be embedded into any kind of button panel with a maximum distance of 15m from the controller.



**ETH cable:** used to connect Z-5R Web to a computer for the controller setup.

**Relay:** used to close the contact to which it is connected (15x35x15 mm).